

# Network

## Why can't I reach my server on the same subnet ? (Windows)

To ensure the quality of service of our network, we have made changes that require you to also make changes to your network configuration if you want to continue to reach other servers in your network segment.

This change in the network does not affect the Internet connection, but only the connectivity of your of your server with the local network segment.

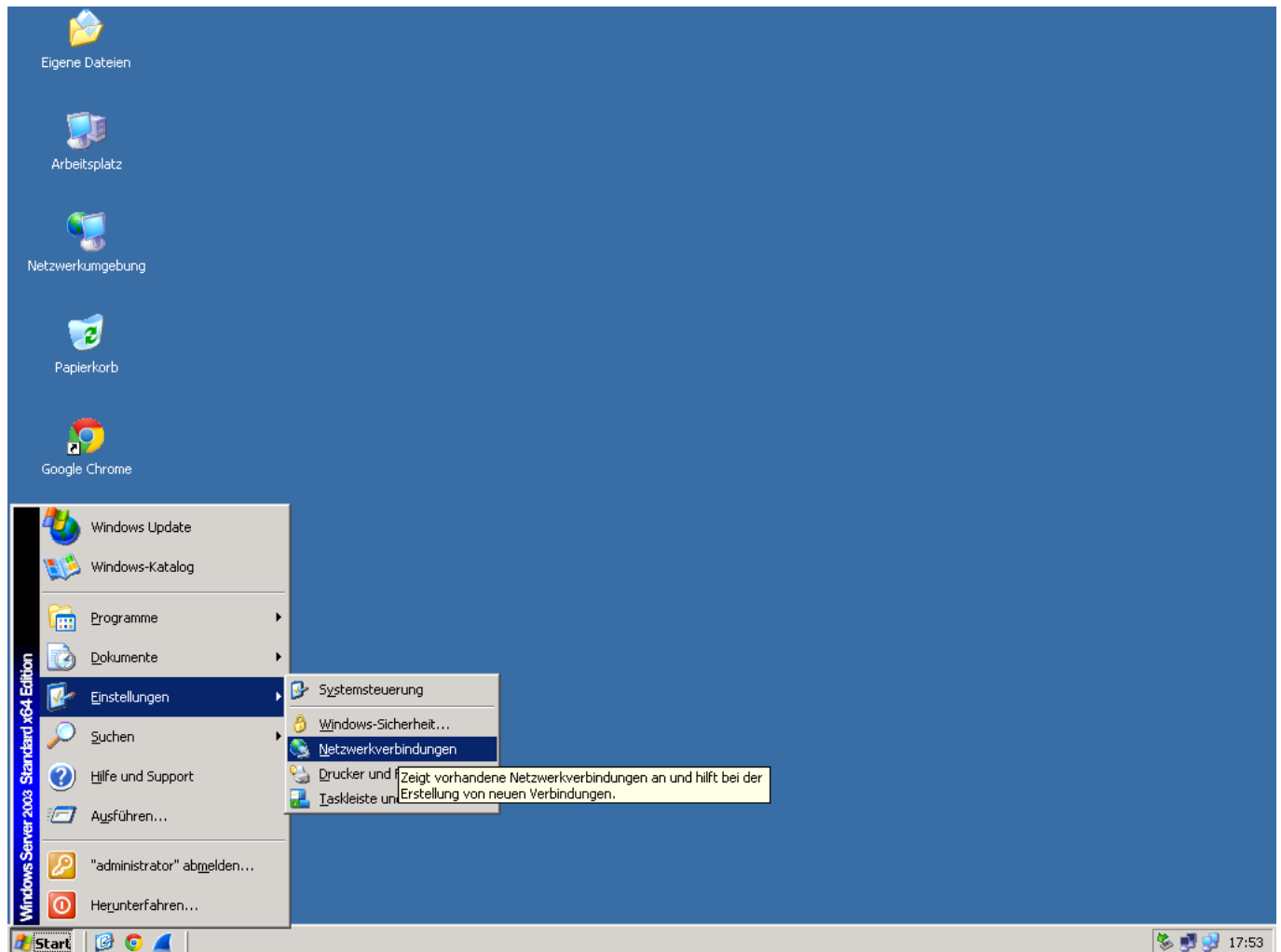
As an example, the following IP configuration has been used in this article:

Main-IP-Adresse: 192.0.2.43/24

Gateway: 192.0.2.1

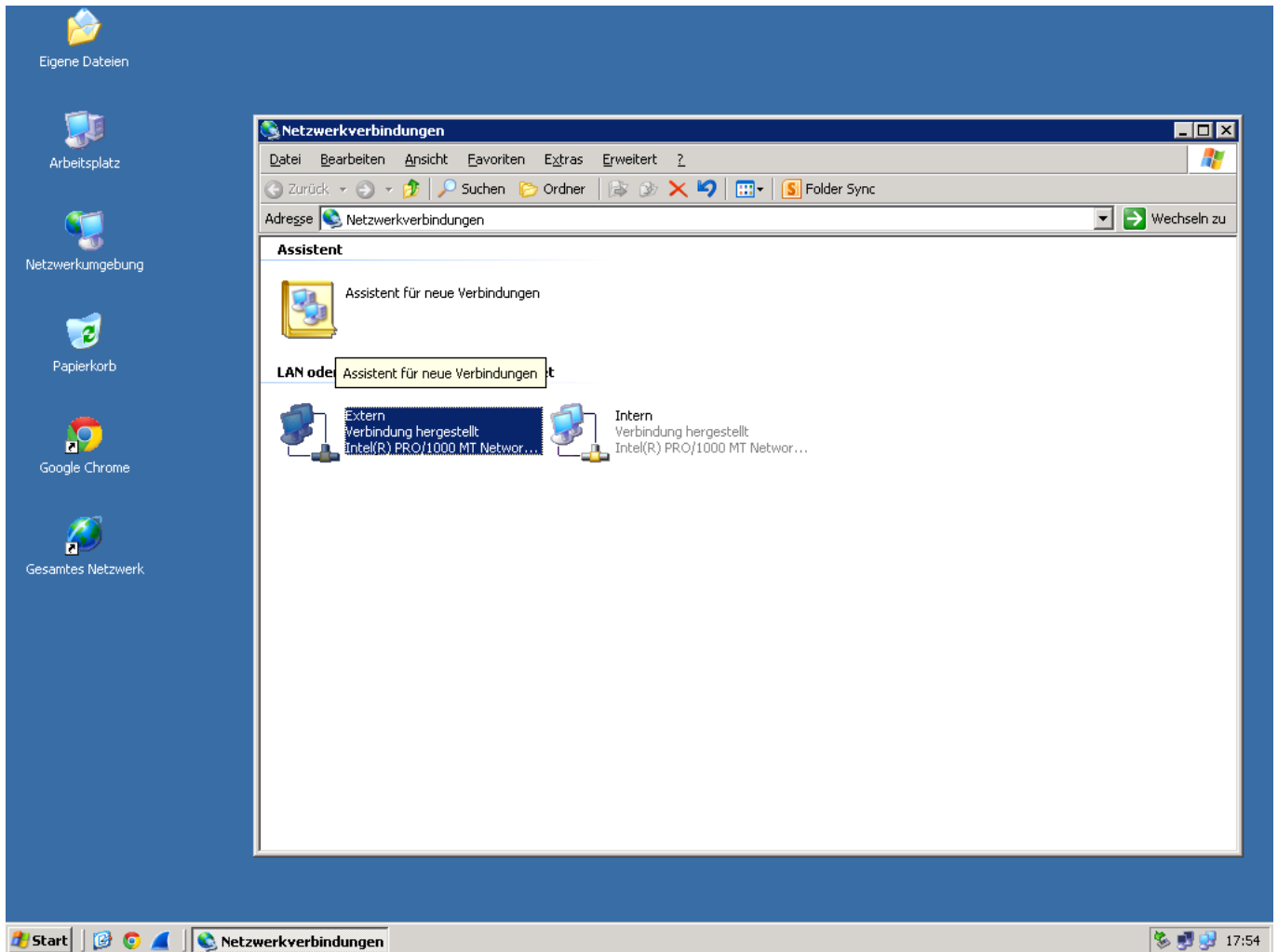
In Windows, perform the adjustment as follows:

1) First, open the network connections.



2) In the selection of available network adapters, select the adapter which is connected to the public network:

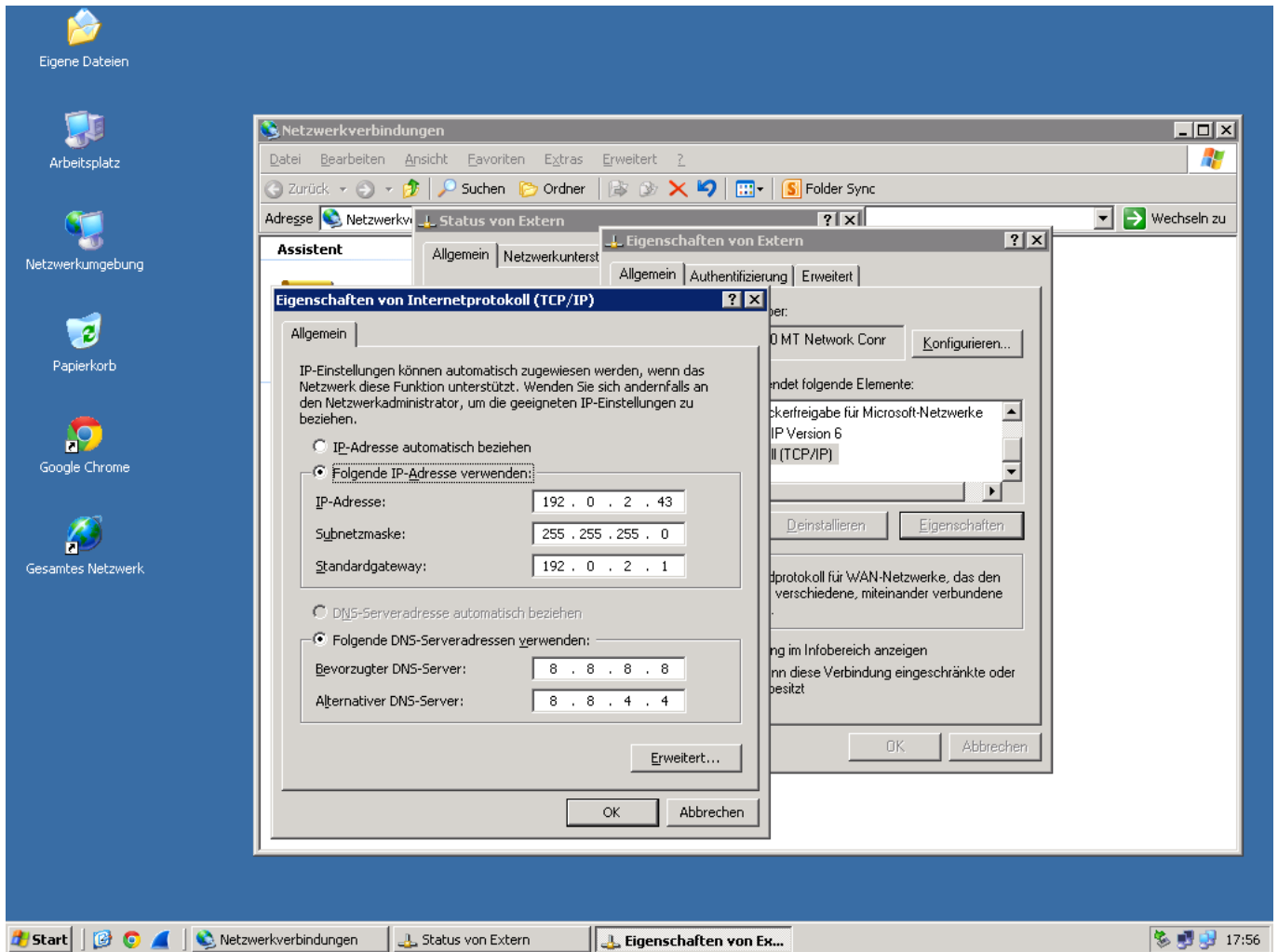
# Network



3) In the status window that opens, select the "Properties" button. In the following window select "Internet Protocol (TCP/IP)" and click again on the "Properties" button.

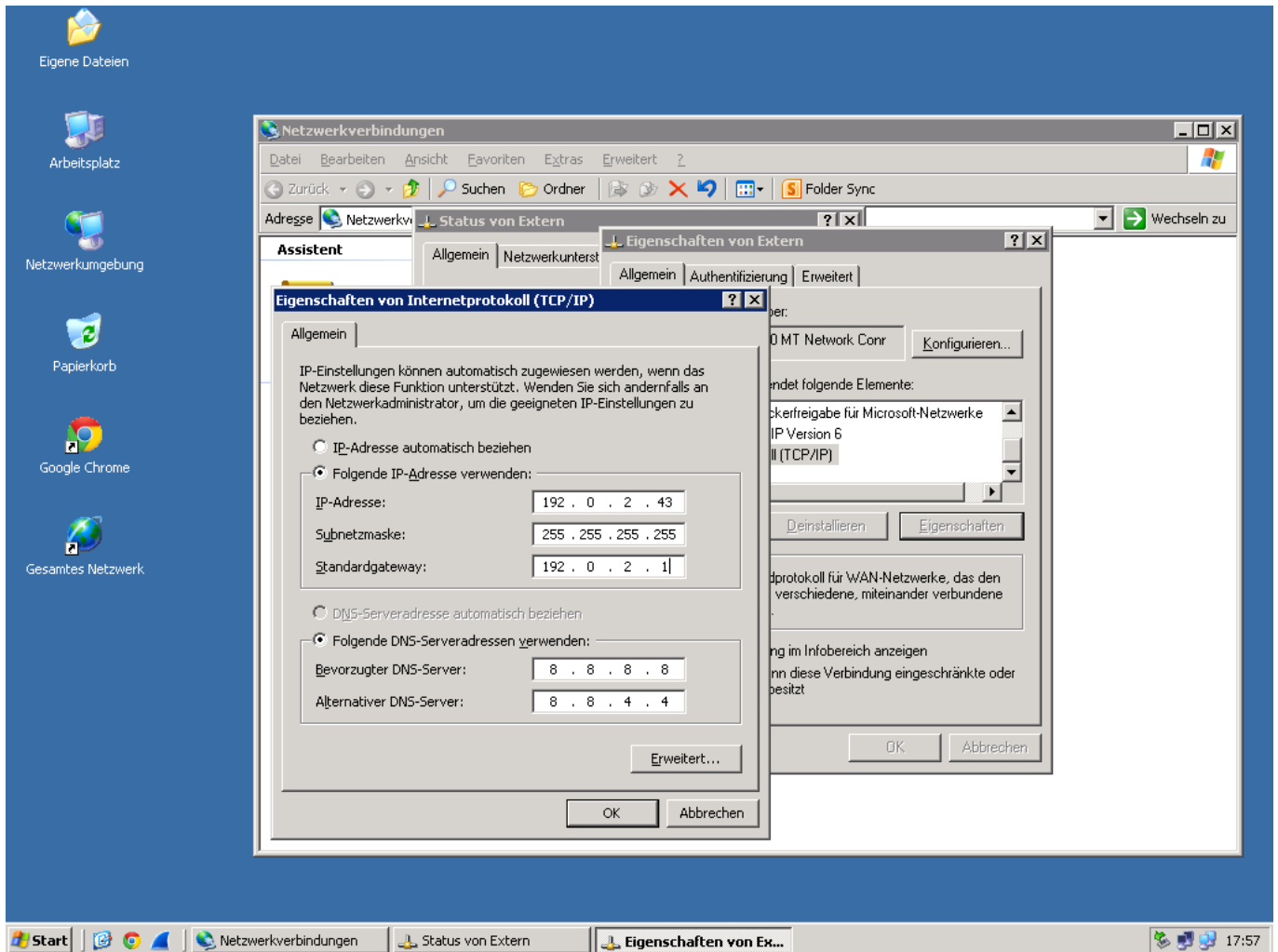
You should now see the current network configuration:

# Network



4) Now change the subnet mask of the IP address to 255.255.255.255:

# Network



The customization has been completed. If you still have any questions, our support team will be at your disposal.

Unique solution ID: #1527

Author: Bettina Brauer

Last update: 2021-04-15 11:40